

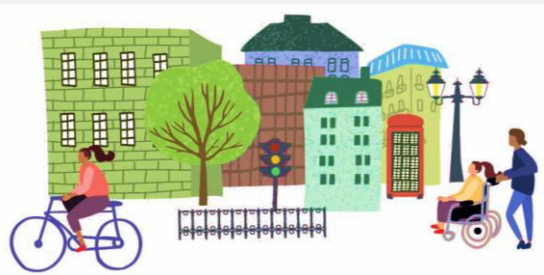
Shaping development locally: Community Plan for Holloway

Planning Aid for London



Former Holloway Prison

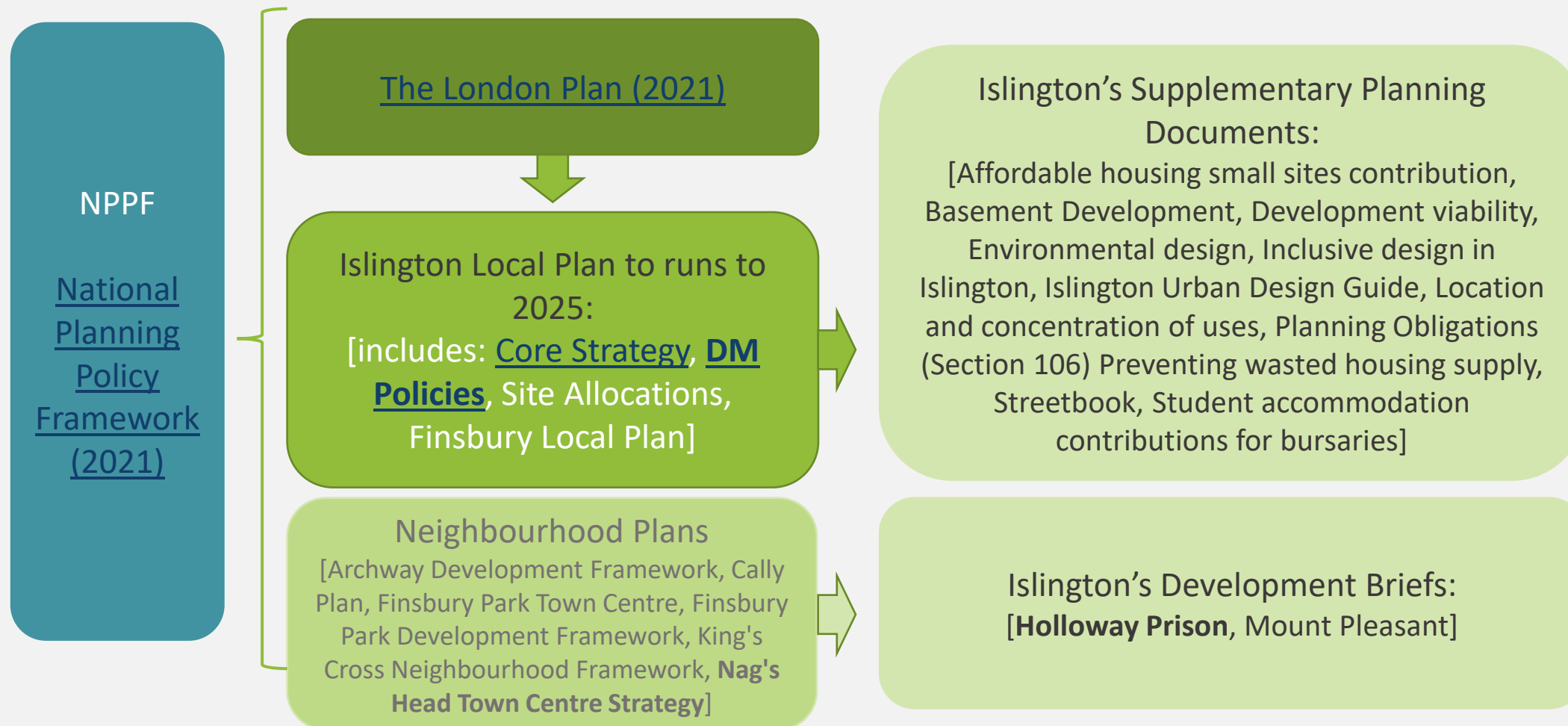
Application ref: P2021/3273/FUL



Planning Policy



Planning Policy for Islington



Commenting on Planning Applications



Making an effective representation



- On time (*Consultation period expires 21/12/2021*)
- Focus on what the planning system considers. These are called '**Material Considerations**'.
- Useful to link your concerns to specific policies in the Local Plan, but this isn't essential.
- Keep it concise, use bullet points, and headings
- Include photos from your property / public areas to illustrate your points
- Make suggestions for changes
- Say what you want and how strongly you feel: Refusal? Amendments? Could a condition address your concerns?
- Look at the evidence documents underpinning the application. Did they include the right evidence?
- Don't feel like you need to use 'planning language'.

MATERIAL CONSIDERATIONS

- Highway Safety/traffic (**Policies DM8**)
- Visual Impact/Design Issues (**Policies DM2**)
- Listed Building/Conservation Area (**Policies DM2**)
- Housing (**Policies DM3**)
- Noise and disturbance (**Policies DM3**)
- Protection of Residential Amenity (Privacy, Daylight, Outlook)
- Odour and Light pollution
- Disabled persons' access
- Hazardous materials/ground contamination
- Trees and Nature Conservation
- Archaeology
- Risk of flooding
- Emerging policy
- Local finance considerations
- Viability

NON-MATERIAL CONSIDERATIONS

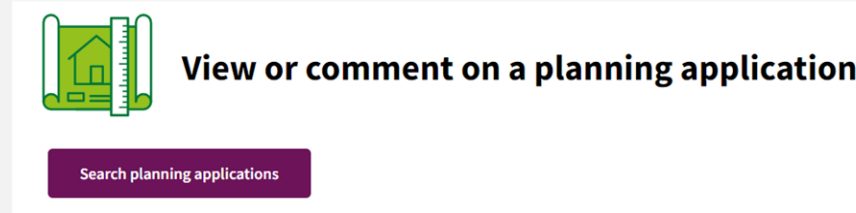
- Property values
- Loss of view
- Protection of private interests
- Covenants
- Boundary disputes/land ownership
- Prior activities of the applicant
- The fact that an application is retrospective
- Matters controlled under other legislation (Building Control, Env Health, HSE)
- Conflict with other laws
- Property maintenance
- Fears of damage to property
- Personal circumstances
- Precedent (what has come before)

If you're concerned about it, but you're not sure if it's a material consideration? Include it.

Finding a Planning Application

<https://www.islington.gov.uk/planning/applications/comment>

1. Search Planning Application



2. Application Number: [P2021/3273/FUL](#)

3. See [‘Related Documents’](#)

Planning aid for London

We would be grateful if all attendees at tonight's event could complete this survey to improve our work:

<https://www.surveymonkey.com/r/PK2KFTF>

Want to know more about us?

Visit our website planningaidforlondon.org.uk and learn how you can contact our town planning advice line. Want to learn more about planning? Have a look at our First aid for planning guides, or listen to the stories of community groups in our Planning aid: Stories of London series.

You can also:

- Email us at info@planningaidforlondon.org.uk
- Call us at 030 0772 9808
- Follow us @Planaidlondon

